



AMOS



ANEMONE



BEE



CELIA



CRAB



DUNSTAN



FERDIE



SEA SEARCHER



EEL



ELAINE



NOTEBUILDER



GUPPY



FATHER  
CROTCHET



QUAVER  
TWINs



UNCLE  
SEMIBREVE



MOTHER  
MINIM



# PIANO PLAY BOOK

This book is to be used alongside a Piano Tutor of your choice.

Choose tunes from the tutor that practise the notes you have learnt in this play book.

Gradually increase your notes as you work through the book.

It would be useful to use the Bass Clef Play Book in conjunction with the Piano Play Book.

Name \_\_\_\_\_





## Sheet 1

Here is **DUNSTAN** the dragon.



His name begins with **D**.  
He lives **under** the ground.

---

---

---

---


---

Can you draw him?



## Sheet 28

---



---

---

---

---

**Elaine** lives at the top  
of the house.  
High **E**.

---

---





---



---

It's **Easy** standing at the  
**bottom** of the ladder.  
Low **E**.





---



---

---

---



---

Are these high or low **E**?



## Sheet 27



Make a tune with **B** and **C**.

**B, B, C, B, C, C, B, B.**



## Sheet 2



**DUNSTAN**'s submarine.  
He calls it the "**Sea Searcher**"

He goes off exploring down into the sea in his submarine.

Draw **C** and **D**.



## Sheet 3

**Dunston** lives under the ground. He likes to go exploring in his submarine the **Sea Searcher**.

---

---

---

---



**D** for **Dunston**



**C** - **Sea Searcher**

Name these notes and play the tune.

---

---

---

---



## Sheet 26

Clap the following:-





## Sheet 25



**MOTHER MINIM** can't keep up with her fit family.

She says "**WAI-T**".



Sometimes she has her little dog.  
2 counts for **MOTHER MINIM**  
and 1 for the dog.

WAIT, 2, 3.



**UNCLE SEMIBREVE** with his round empty tummy,  
he needs 4 meals a day.

WAIT, 2, 3, 4.



## Sheet 4

Draw your own **C** & **D** tune.

---

---

---

---

---

Sing the Notebuilder song.  
Here is the **Notebuilder** saying its 'Easy'  
standing on the bottom rung of the ladder.



---

---

---

---

---



**E** for Easy.



## Sheet 5

Draw in these notes:-

---

---

---

---

---

E D C D C E D

---

---

---

---

---

Write a tune using C, D & E for Easy.



## Sheet 24

### FATHER CROTCHET

goes for a walk.



The **QUAVER** twins hold hands and go jogging.

Draw the following:-

**WALK,**

**WALK,**

**JOGGING.**

**JOGGING,**

**JOGGING,**

**WALK.**



## Sheet 23

---

---

---

---

---

**A,**      **B,**      **C,**      high **D,**      **E.**  
Draw in the notes above.

Now draw your own tune using  
**A, B, C, high D** and **E.**

---

---

---

---

---



## Sheet 6

---

---

---

---

---

Draw a **NOTEBUILDER**.  
What is your **NOTEBUILDER** doing?

---

---

---

---



**D**

**DUNSTAN**



**E**

**EASY**



**?**



**?**

---

---

---

---





## Sheet 7

Tell the Notebuilder story.  
Sing the Notebuilder Song and move the  
Notebuilder character on your board.

Find:

**D** for '**D**ecorate delightfully',  
**F** for '**F**inish off the roof',  
**G** for '**G**etting harder and higher'.

Now draw in the Notebuilders

---

---

---

---

---

**F** (Finish off the roof) **E** (Easy) **G** (Getting Higher)



## Sheet 22

Draw these notes, then find them on the piano.

---

---

---

---

---

**A**, **B**, **C**, **D** for **D**ecorate

---

---

---

---

---

**C**, **B**, **D** for **D**ecorate, **A**.



## Sheet 21

This is **Celia** Centipede.



Her name begins with **C**.

---

---

---

---

---

Where does she live?



## Sheet 8

Write your own tune using

**C** - Sea Searcher

**E** for Easy

**D** - Dunstan

**G** for 'Getting'

---

---

---

---

---

Draw in these notes:-

---

---

---

---

---

**D G C E C D**



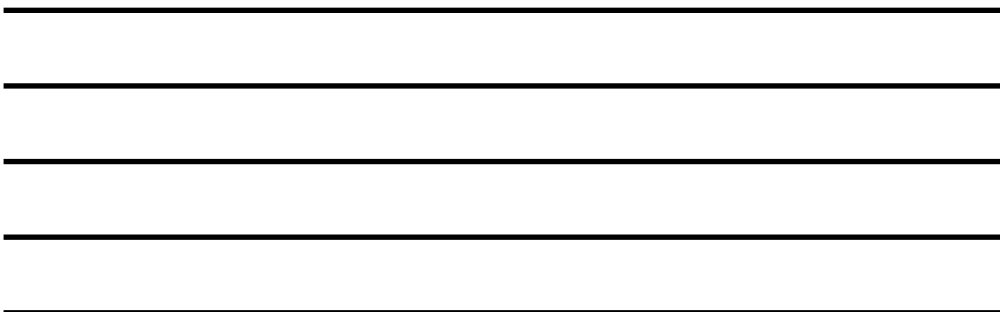
## Sheet 9

Sing the Stave House song  
and put the characters on your board.

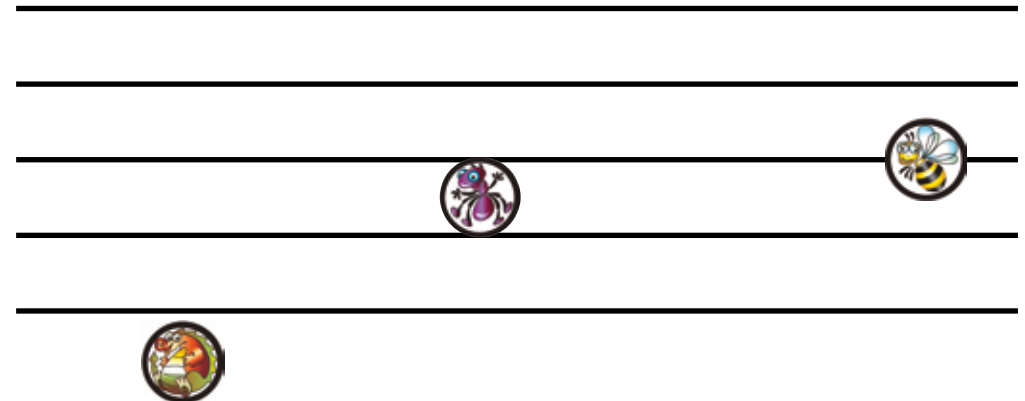
**Ferdie** Fox lives in room number 1.



Draw **Ferdie** Fox in his room.



## Sheet 20



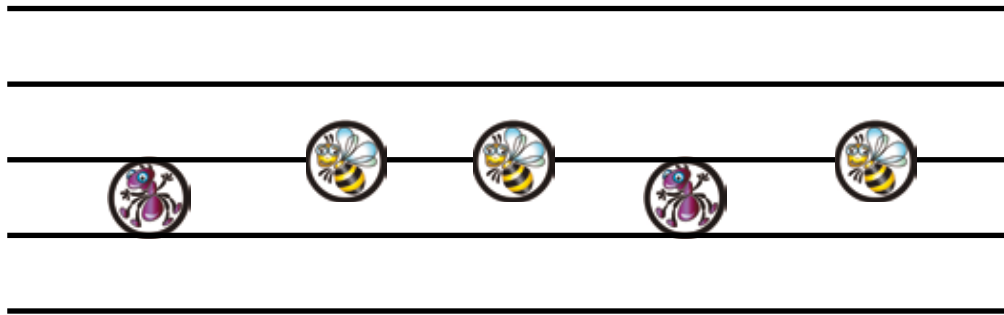
Where is **Dunstan**?

Where is **Amos**?

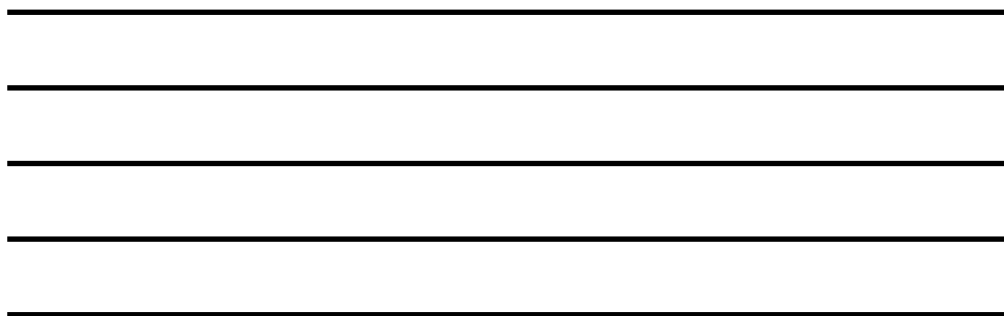
Where is **Bee**?



## Sheet 19



Read this tune, then play it.

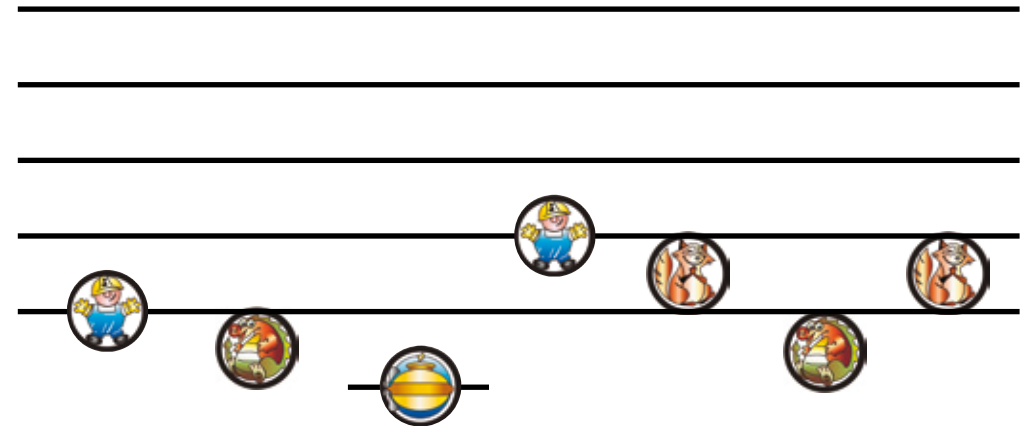


Draw your own tune using **A** and **B**.  
Play your tune.

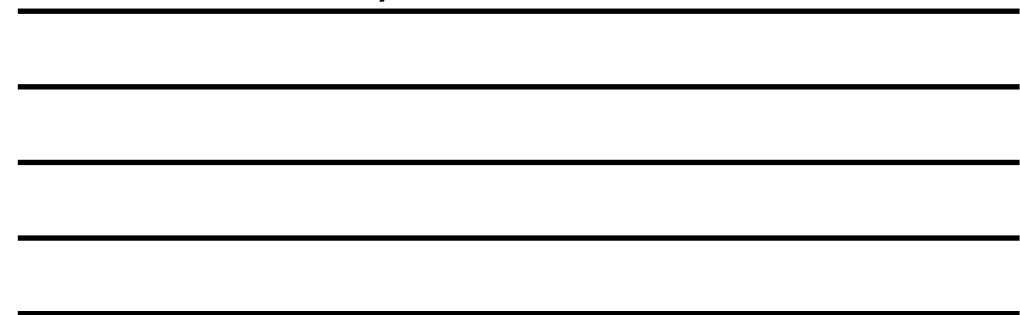


## Sheet 10

Can you read this tune?



Draw your own tune using  
low **E** for Easy and low **F** for Ferdie fox.



Now play your tune.



## Sheet 11

---

---

---

---

---

Where does **DUNSTAN** live?

Where does **FERDIE** fox live?

Where is "**G**etting harder"?

Where does "**NOTE**BUILDER **E**" go?

Now draw them all in.



## Sheet 18




Tell Bee's story.

**Bee** flies over to visit Stave House and lands on the window sill right in the middle of the **House**.

---

---

---



---

---

Draw some more **Bees**.



## Sheet 17

---

---

---

---

---

Where does **E** live?      Where does **A** live?  
Where does **D** live?      Can you draw them?



Read this tune.  
Find the notes on the piano.



## Sheet 12



Sing the Stave House song and put  
the characters on the board.  
Play a mix-up game.

Here is **AMOS** the ant.  
His name begins with **A**.

---

---

---

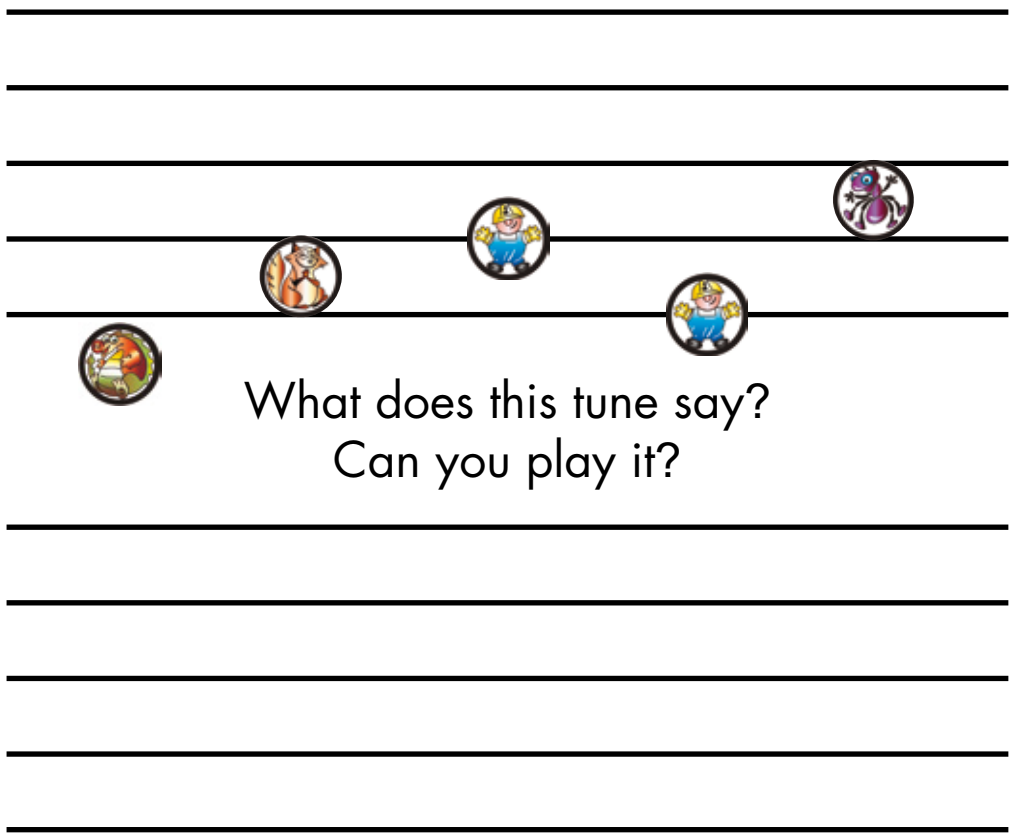
---

---

Draw some more **A**'s.



## Sheet 13



Draw in **FERDIE** fox, **AMOS** ant and  
**NOTEBUILDER G** - **G**etting harder.

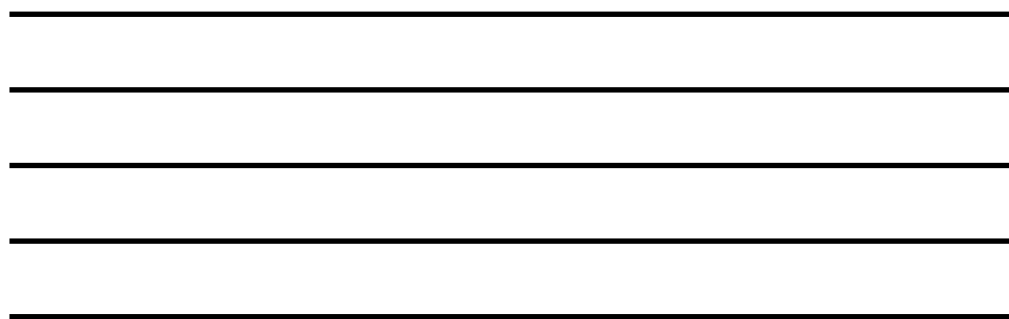


## Sheet 16

Here is **ELAINE** the elephant.



Her name begins with **E**.



Where does she live?  
Can you play her sound on the piano?



## Sheet 15

Sing the Notebuilder song.



Where is the **NOTEBUILDER** decorating  
**Delightfully**? (high D)

Where is it "**G**etting harder" ?

Where is it "**E**asy" ? (low E)

Where does he "**F**inish off the roof" ?

Can you draw **Bee** ?



## Sheet 14

Sing the Stave House song  
and put each character  
in the correct room  
on your board as you sing.